

## ABOUT THE UNITED HORNED HAIR SHEEP ASSOCIATION, Inc.

The United Horned Hair Sheep Association, Inc., with 6 divisions representing the breeds of: Painted Desert Sheep, Texas Dall Sheep, Black Hawaiian Sheep, Corsican Sheep, Desert Sand Sheep, and Mouflon Sheep began Registrations in the Late Fall of 2009.

Founded in April 2009, the organization was officially recognized as an **Incorporated Non-Profit Corporation** on July 6, 2009.

A group of sheep breeders, from across the nation, worked to create a **national non-profit organization** that is dedicated to serving the members and the public.

When in conception and development, there were no other registries for Texas Dall, Black Hawaiian, Corsican, Desert Sand, nor Mouflon Sheep. As for the Painted Desert sheep breed, there was a need to move away from a sole-proprietorship registry to a **member owned and member operated non-profit organization** to help benefit and promote this breed.

Including all the divisions of these separate but related sheep and one of their parent breeds, the Mouflon, seemed to be the best way to produce an organization that would be positioned to promote and educate other sheep breeders and the general public about the breeds represented.

### Our Purpose

from our ARTICLES of INCORPORATION

- 1. To engage in the promotion, conservation, education and furtherance of public awareness of each of the breeds represented**
- 2. To assist members in developing new markets and expanding current markets.**
- 3. To keep a breed standard which will serve to identify and register individual animals which qualify as one of the breeds represented.**
- 4. To promote interest in the breeds represented and whenever possible to attract new breeders for promotion, preservation, & well being of the breeds.**

**5. To register and keep pedigrees and records of all animals that qualify as one of the breeds represented. The Registry portions of each division are dedicated to serving as a holding place for Official Records of Pedigrees based on information that members submit to the registry.**

**6. To promote more education, research or studies on the advantages of hair or shedding sheep and diseases affecting sheep in general.**

Here are some of the activities which the United Horned Hair Sheep Association, Inc., hopes to participate in and offer at points in the future:

- ❖ **\*Offer electronic registration submission utilizing a professional registry company resulting in quicker turn around and higher accuracy rates**
- ❖ **Assist with staffing or financing booths at Fairs/Shows**
- ❖ **Finance youth and adult scholarships**
- ❖ **Host educational gatherings, in person or internet**
- ❖ **Regularly produce a newsletter(s)**
- ❖ **Promote, as able, shows which allow the breeds represented by UHHS, Inc., to be shown**
- ❖ **Encourage members to participate in studies and research promoted by universities in the USA**
- ❖ **Provide written articles for periodicals, books, or websites related to sheep and farming**

We hope you will come and join us in our efforts for these wonderful sheep which the United Horned Hair Sheep Association, Inc., represents!



## United Horned Hair Sheep Association, Inc

A Non-Profit Organization

Representing:

Painted Desert Sheep,  
Texas Dall Sheep,  
Black Hawaiian Sheep,  
Corsican Sheep,  
Desert Sand Sheep,  
& Mouflon Sheep

[www.unitedhornedhairsheepassociation.org](http://www.unitedhornedhairsheepassociation.org)  
[uhhsa@yahoo.com](mailto:uhhsa@yahoo.com)

270-525-0120 (Valerie Wright, President)  
937-835-3006 (Sara Fisher, Secretary)  
281-468-7744 (Brenda Savage, OR Inspector)

## ABOUT THE BREEDS

History: Painted Desert, Texas Dall, Black Hawaiian, Desert Sand, and Corsican sheep are actually the result of initial crosses decades ago between the shedding, European Mouflon Sheep (*Ovis musimon*, native to Corsica and



Sardinia) with a wide range of more well known “wool” breeds of sheep including: Rambouillet, Churro, Merino, and Jacob.



At times, some of the crosses also included a hair or shedding sheep called the Barbados Blackbelly (*Ovis aries*) which was imported from the Caribbean Island of Barbados, West Indies with bloodlines originally coming from Africa.



Horns: Horns are required on all rams. Ram lambs usually will display 1 to 3 or more inches of horn growth by age 3 months. Some rams may display more than 2 horns due to Churro or Jacob ancestors.

Coat – NO SHEARING: These sheep are considered a hair or shedding sheep. They maintain the ability of their parent breed, the Mouflon, to shed a thicker winter more woolly undercoat in Spring/Summer, leaving a slick hair coat.

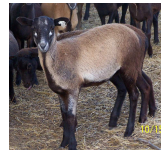
Coat – COLORS: Coat colors of the sheep represented by UHSA, Inc., range from the spotted Painted Desert, all white



Texas Dall, solid black Black Hawaiians, brown/black



UHSA breeds for everyone to enjoy!



The sheep range from 19 inches at the withers for some ewes to 35 inches at the withers for rams.



4ft fence is usually adequate, though some of the sheep may be able to clear the fence if pushed. An area to catch or work the sheep is really helpful.

These sheep are generally more able to withstand internal parasites than most wool breeds and with the shedding ability, external parasites can easily be kept at minimum.



Trimming hooves may be necessary due to farm specific soil qualities.



Size: Sizes of the breeds range from 60 lbs - 120 lbs for a mature ewe. Rams may way 75 – 200 + lbs with Texas Dall rams probably weighing the most.

Nature and Care: These sheep flock well and can be tamed though taming of intact rams is cautioned.



Corsicans, to champagne colored Desert Sands, and of course with the parent Mouflon Breed being one of the most colorful wild sheep, there is sure an eye catching color with the



These sheep are good mothers though animal husbandry practices should always be followed.

Markets: These sheep are multi-market oriented which is extremely beneficial to the economy-wise shepherds.

Meat – perfect for today’s families which may not consume a large amount of meat at once. It is also much easier to store and no big freezers are needed. The meat is very lean and tasty with none of the strong “mutton” flavor found in wool sheep.

Horns and pelts – can be used to make buttons, cane handles, crafts, garments, and wall hangings. More of the sheep sent for meat is used – less waste! Some people will brush their sheep or pick up the patches of shed wool and collect for crafts.

Fenceline, large lawns, and weed lot cleaning – These sheep are excellent at keeping fencelines, weed lots and large lawns looking nice. Plus, they look good doing it and add natural fertilizer as they go!



Breeding – Quality Breeding stock is always in demand from dependable, ethical, and honest farms and ranches.



Showing – This is a relatively new venue for hair/shedding sheep in general and especially for UHSA, Inc, represented breeds. Painted Desert and Texas Dall Sheep have been shown at live sheep shows! Be part of the future!

Lambing: While Mouflon ewes will tend to give only single lambs, some of the breeds may well present multiple births with up to 4 having been recorded.